

# Refresh Your Rotary Club For The Next Era

Peter Frueh – Membership District 9800



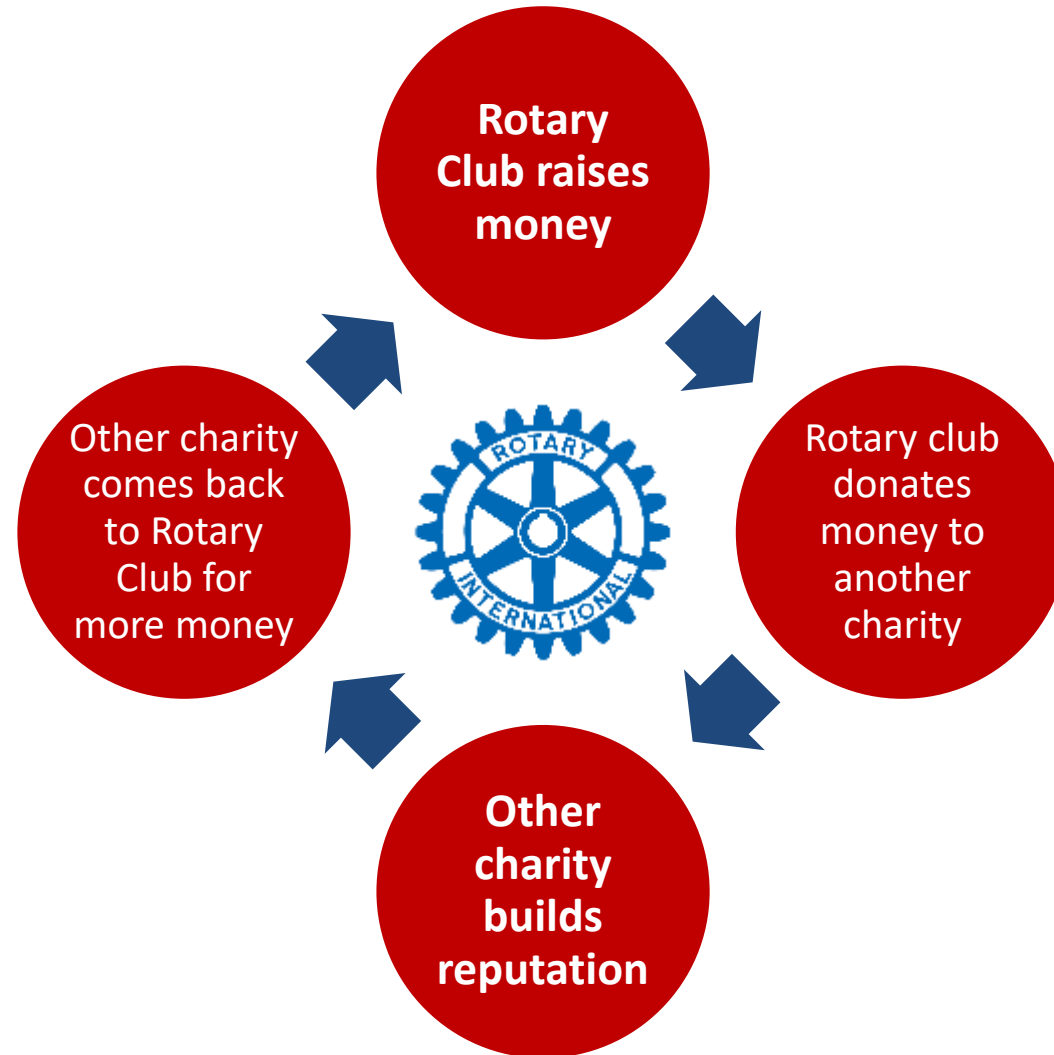
# Why do people to join Rotary?

- Participate in service projects in the local community
- Participate in international service projects
- Personal growth and learning
- Connect with others outside work/friends
- Professional networking and business growth
- Not - *to raise money for another charity to help build that charity's brand?*

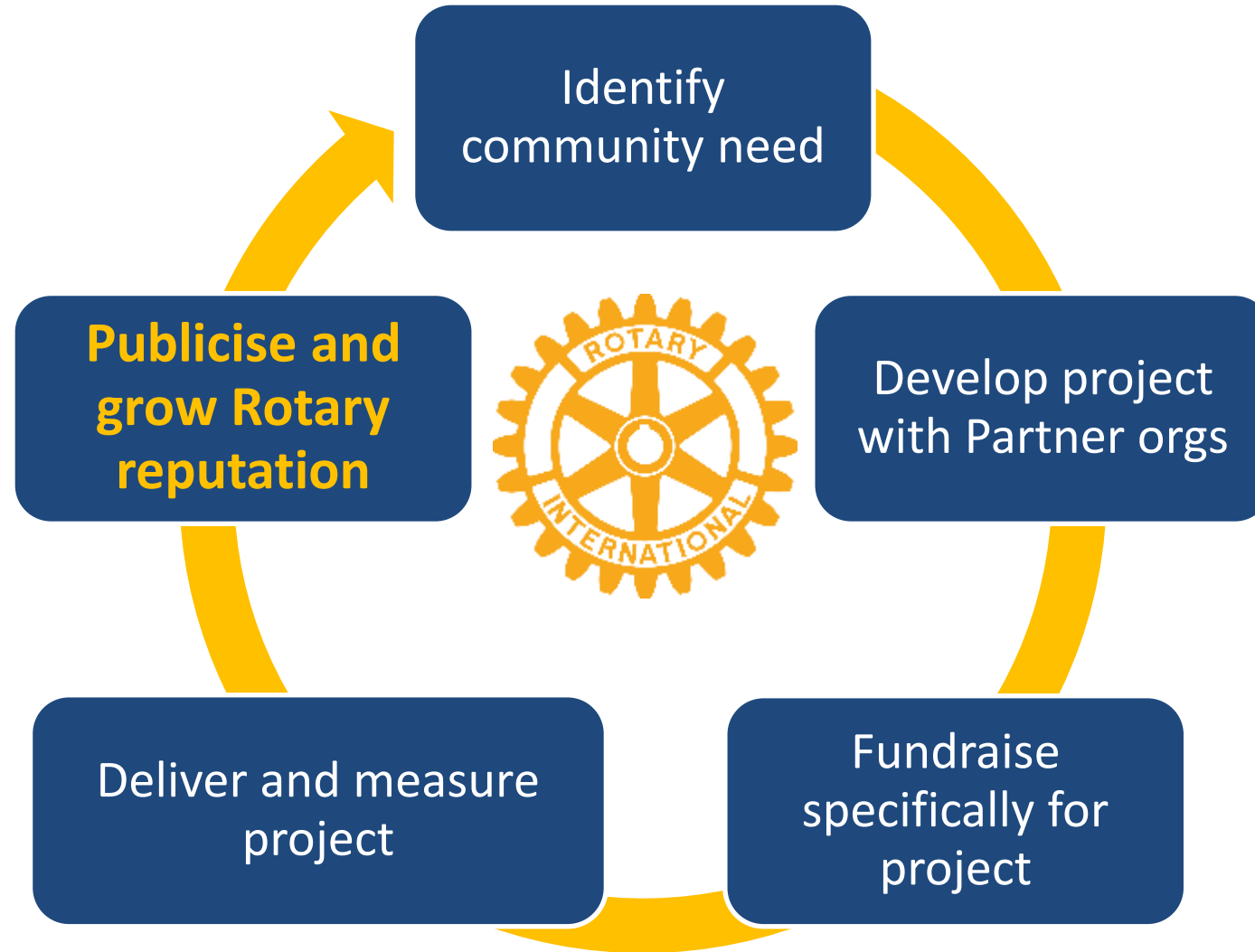
Rotary



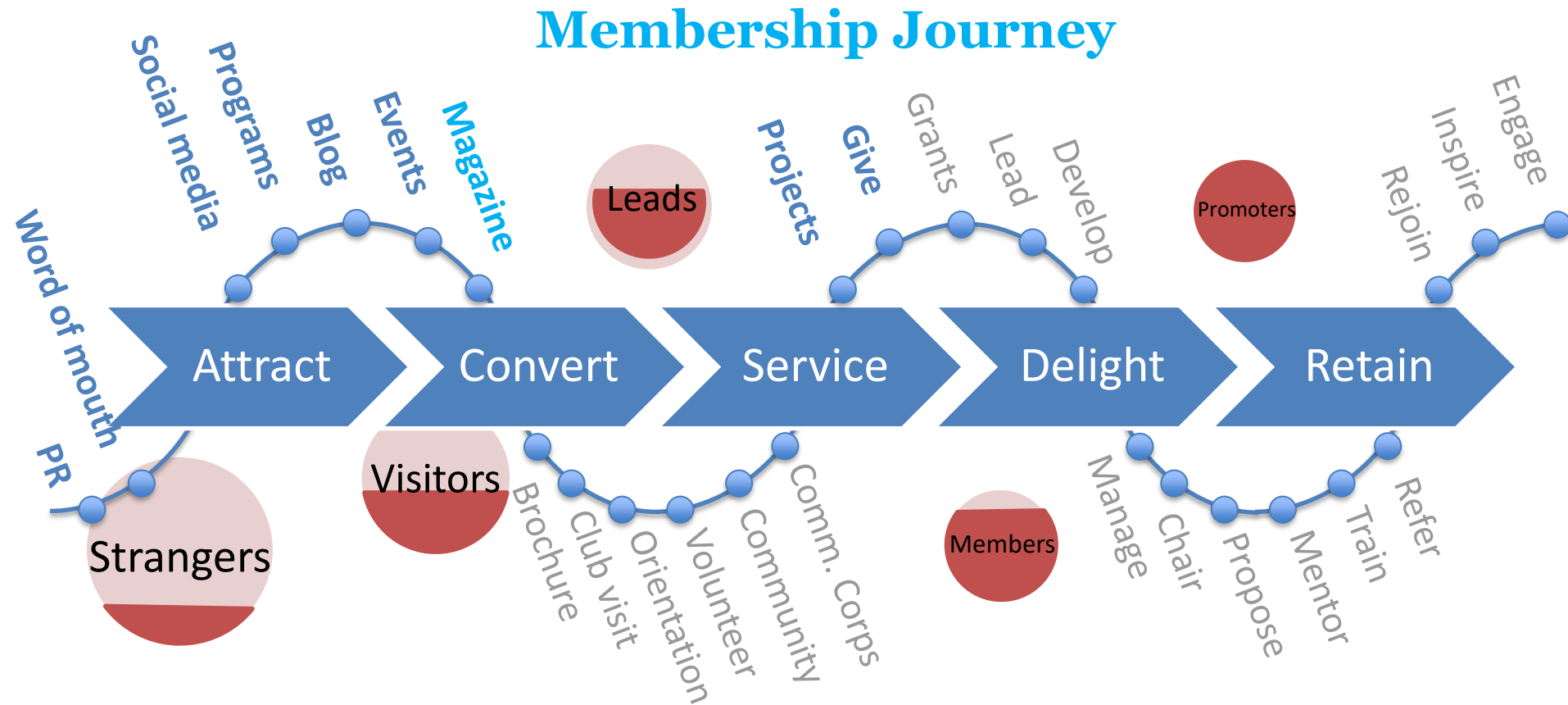
# The Negative Cycle of Fundraising



# Positive Cycle of Community Projects



# Participant Focus on Rotarian Experience



# Use this time to reimagine your Club

Pre the health crisis, how much of your Club time was devoted to fundraising?

How much of the funds raised go to Rotary Branded projects?

Now is the time to rethink project priorities



# Some positive steps in D9800

- 3 new clubs in our District in last nine months
- Several new clubs in formation stage
- New clubs gender neutral and younger
- New clubs more project focused
- Some clubs considering satellite clubs:
  - Only need 8 members
  - Different meeting arrangements
  - More project focused

# Takeout messages for your club

- Support your members during health crisis
  - phone calls and online
- Update your club Constitution and Bylaws
- Rethink your club projects and events
- Reach out to partnering organizations
- Develop a balanced membership plan
- Use available resources on RI website
- QUESTIONS?